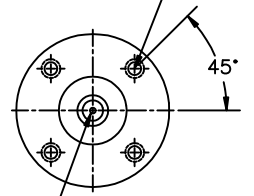


CUSTOMER NAME		MODEL NO.			MTG.		REMARKS:		
CUSTOMER P.O.		FRAME	R.P.M.	VOLTS	PHASE		INSUL		
CERTIFIED BY		H.P.	TYPE	ENCL	FREQ.		AMB.		

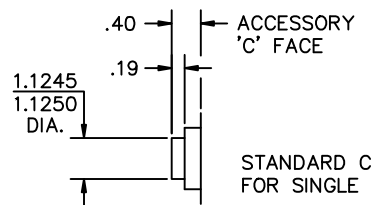
SHEET 2 OF 3

UNITS: INCH	SCALE: NONE	PROPORTION: NONE	PART NUMBER 877	DWG. SIZE A
-------------	-------------	------------------	-----------------	-------------

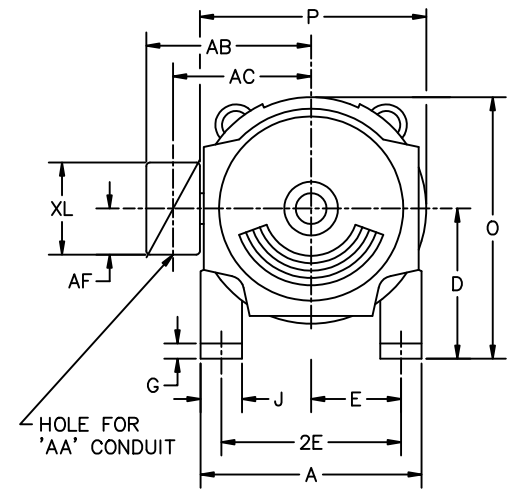
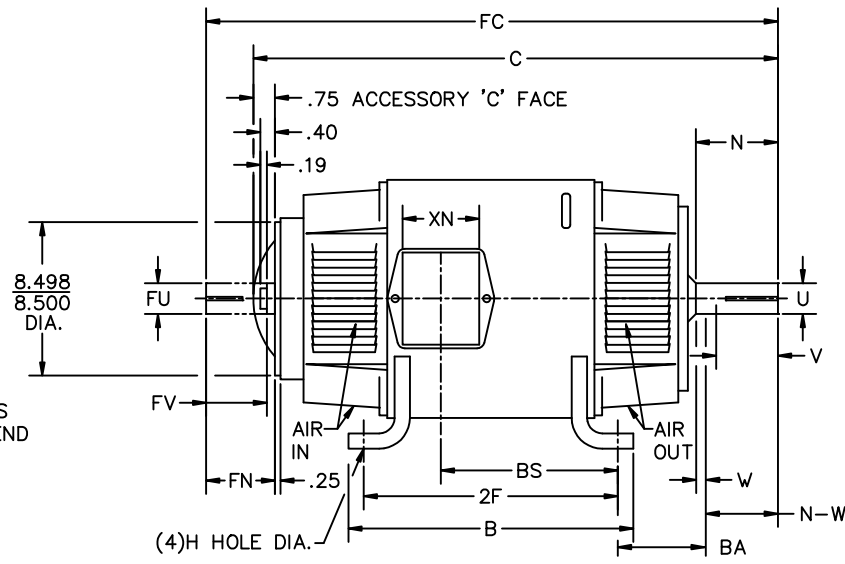
1/2-13UNC-2B THD X 1.00 DEEP
4-HOLES EQUALLY SPACED
ON A 7.250 DIA. B.C.



1/2-13 UNC-2B THD'S
1.00 DEEP IN SHAFT END



STANDARD COMM END
FOR SINGLE SHAFT EXTENSION



FRAME	FOOT MOUNTING						D.E. SHAFT EXTENSION					DRIVE KEY		ACC SHAFT EXTENSION			ACC KEY		FRAME						
	BA	E	2F	G	H	J	N	N-W	U	V	W	KEY-SQ.	KEY-LONG	FN	FU	FV	KEY-SQ.	KEY-LONG	A	B	C	FC	D	O	P
407AT	6.63	8.00	18.00	.81	.938	4.00	5.44	5.25	2.625	5.00 ³	.19	.625	4.00	4.95	2.375	4.70	.625	3.50	20.00	20.00	40.13	44.34	10.00 ²	20.19	20.38
L407AT	6.63	8.00	18.00	.81	.938	4.00	5.44	5.25	2.625	5.00 ³	.19	.625	4.00	4.95	2.375	4.70	.625	3.50	20.00	20.00	41.25	45.46	10.00 ²	20.19	20.38
409AT	6.63	8.00	22.00	.81	.938	4.00	5.44	5.25	2.625	5.00 ³	.19	.625	4.00	4.95	2.375	4.70	.625	3.50	20.00	24.00	44.63	48.84	10.00 ²	20.19	20.38
L409AT	6.63	8.00	22.00	.81	.938	4.00	5.44	5.25	2.625	5.00 ³	.19	.625	4.00	4.95	2.375	4.70	.625	3.50	20.00	24.00	45.75	49.96	10.00 ²	20.19	20.38
L4011AT	6.63	8.00	28.00	.81	.938	4.00	5.44	5.25	2.625	5.00 ³	.19	.625	4.00	4.95	2.375	4.70	.625	3.50	20.00	30.00	52.75	56.96	10.00 ²	20.19	20.38

FRAME	CONDUIT BOX							ARM APPROX. WK ² LBS.FT. ²	APPROXIMATE WEIGHT
	AA	AB	AC	AF	BS	XL	XN		
407AT	3	18.28	14.45	3.34	14.50	11.63	7.76	35.47	1317 ⁵
L407AT	3	18.28	14.45	3.34	15.62	11.63	7.76	35.47	1367 ⁵
409AT	3	18.28	14.45	3.34	19.00	11.63	7.76	43.81	1613 ⁵
L409AT	3	18.28	14.45	3.34	20.12	11.63	7.76	43.81	1663 ⁵
L4011AT	4	19.28	14.63	3.50	27.70	13.40	13.50	55.64	2260 ⁵

- 1) SHAFT DIAMETERS TO 1.500 TOLERANCE +.0000 - .0005
SHAFT DIAMETERS ABOVE 1.500 TOLERANCE +.0000 - .0010
SHAFT DIAMETERS TO 1.625 RUNOUT .002 T.I.R. MAX.
SHAFT DIAMETERS ABOVE 1.625 RUNOUT .003 T.I.R. MAX.
- 2) 'D' DIMENSION TOLERANCE +.000 - .080
- 3) 'V' DIMENSION IS MAX. HUB LENGTH ON SHAFT
- 4) CONDUIT BOX CAN BE ROTATED IN 90° STEPS ON ITS OWN AXIS.
- 5) TOTAL WEIGHT OF MOTOR.
- 6) ALL DIMENSIONS NOT NOTED ARE NOMINAL DIMENSIONS CONSULT FACTORY FOR TOLERANCES.

FOR F1 OR F2 CONDUIT BOX
LOCATION SEE SALES ORDER

DESIGNER CSL 7-19-91	BALDOR			
ENGINEER RFL 7-19-91				
ENGINEER DAG 7-19-91				
MANUF. RWT 7-19-91				
TITLE: DIMENSION SHEET DPFG, STD AT SHEET 2 OF 3				
B 54100 ADD L4011AT FRAME	CSL 3-16-1994	PART NUMBER 877	DWG. SIZE A	REV. B
REV. ECO.	DESCRIPTION	BY DATE		

B 54100 ADD L4011AT FRAME	CSL 3-16-1994	PART NUMBER 877	DWG. SIZE A	REV. B
REV. ECO.	DESCRIPTION	BY DATE		